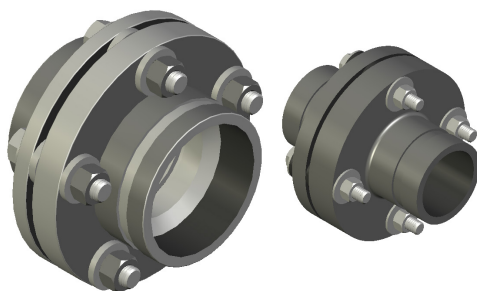


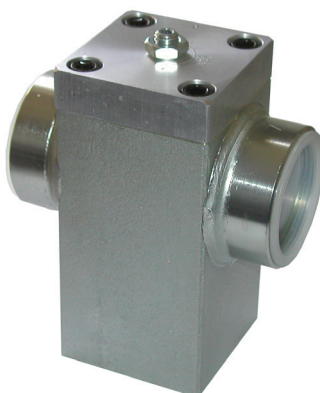
OIL LINE COMPONENTS



Model No.	Oil Line Size	Inlet Type	Outlet Type
ISO-20GG	2"	Grooved	Grooved
ISO-20GT		Grooved	NPT
ISO-20TT		NPT	NPT
ISO-25GG	2.5"	Grooved	Grooved
ISO-25GT		Grooved	NPT
ISO-25TT		NPT	NPT
ISO-30GG	3"	Grooved	Grooved
ISO-30GT		Grooved	NPT
ISO-30TT		NPT	NPT

The **Isolation Couplings (ISO)** are available in three sizes both grooved and threaded. These couplings are designed for electrical isolation with a Dielectric Strength of 42 kV. They will also help reduce vibration and reduce noise transmission to the cab. The maximum operating temperature for these Isolation Couplings is 225° F (107° C).

All Isolation Couplings are designed to meet or exceed ASME A17.1/CSA B44



Model No.	Oil Line Size	Inlet Type	Trip Flow Range
PRV-075G	.75"	Grooved	2-26
PRV-075T		NPT	
PRV-100G	1"	Grooved	27-45
PRV-100T		NPT	
PRV-150G	1.5"	Grooved	46-110
PRV-150T		NPT	
PRV-200G	2"	Grooved	111-208
PRV-200T		NPT	
PRV-250G	2.5"	Grooved	209-318
PRV-250T		NPT	
PRV-300G	3"	Grooved	319-546
PRV-300T		NPT	

The **Pipe Rupture Valve (PRV)** is a simple but effective way to quickly and smoothly stop a car should an overspeed of the elevator occur. The PRV is connected directly to the pressure line between the control valve and the jack. The supplied connections on the PRV make installation quick and easy. The PRV comes with either NPT or grooved connections. Trip flow range is GPM x 1.25.



Model No.	Oil Line Size	Inlet Type
SOV-20G	2"	Grooved
SOV-20T		NPT
SOV-25G	2.5"	Grooved
SOV-25T		NPT
SOV-30G	3"	Grooved
SOV-30T		NPT
SOV-40G	4"	Grooved
SOV-40T		NPT

The **Shut Off Valve (SOV)** is used to isolate one section of the system from another. All Shut Off Valves are constructed of ductile iron bodies and use a stainless steel ball. A locking device is standard on all sizes.