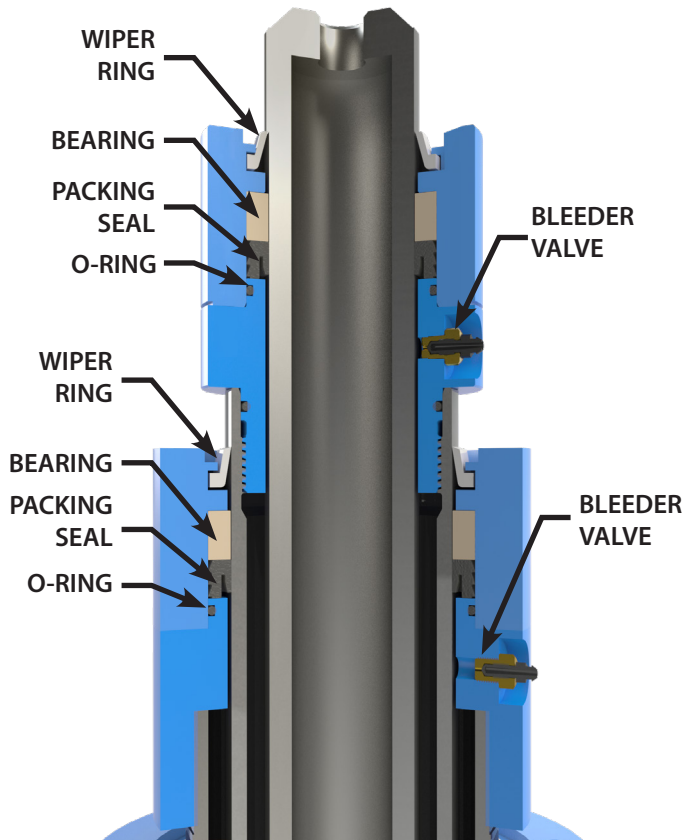
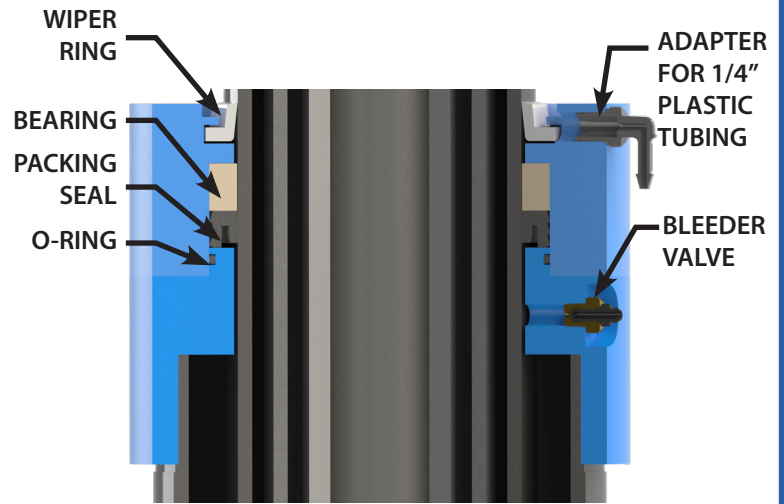


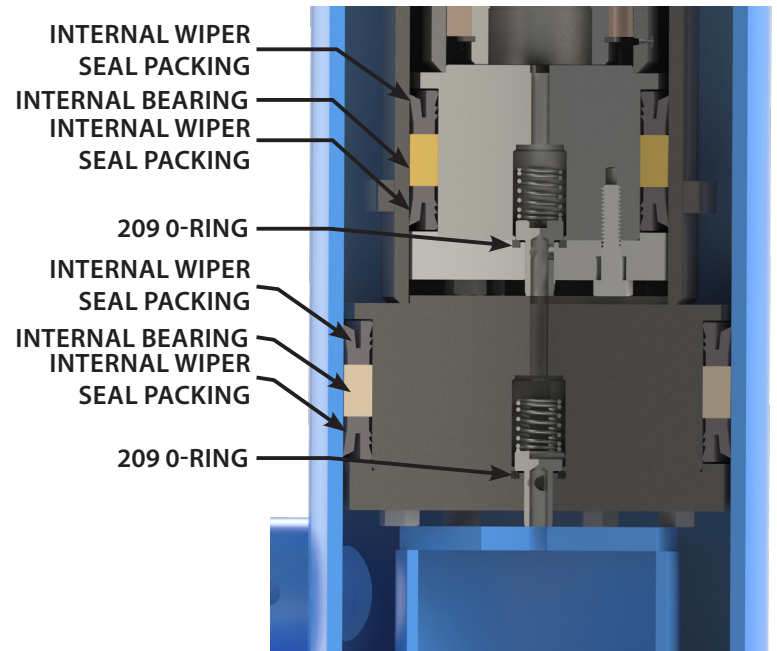
UPPER AND INTERMEDIATE HEADS



LOWER HEAD



INTERNAL PACKING, INTERMEDIATE & LOWER



JACK UNIT	PACKING SET PART NUMBER		TORQUE (ft/lbs)	INTERNAL SOCKET HEAD BOLT SIZE	TORQUE (ft/lbs)
	INTERNAL	EXTERNAL			
TJ3-160	46.160313102100	46.160313102200	16	5/16"-18 X 3/4"	45-50
TJ3-250	46.250313602100	46.250313602200			

EECOLube



EECOLube is a performance improving friction modifier oil additive formulated to reduced "Stick Slip", rough starts & stops and prevent noise in hydraulic elevator systems.

PeViCol



The **PeViCol PVC Cement (PVC-1)** was specially designed for gluing PVC pipe. This non-flammable cement does not require a primer. The low odor and low emissions allows it to be used indoors with minimal ventilation. The cement can be used in a temperature range from 32° - 175° F (0° - 80° C). PeViCol PVC Cement, a NordColl product, is not classified as an environmental toxin and the solvents in solution are biologically degradable.

Evacuation Pump



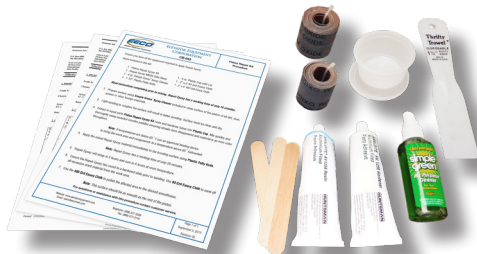
This **Evacuation Pump (EP-01)** is used to drain residual oil remaining in the space between the cylinder(s) and the piston(s) while disassembling the Telescopic Jacks to service the internal head(s). The pump has a 1/4" shaft to fit a drill motor (minimum speed of 800 rpm) and is supplied with 25'-0" of flexible tubing. Longer tubing lengths are available. The pump has a maximum head of 55'-0", 1.8 gpm based on 1200 rpm, and operating temperature of 120° F. Do not pump gasoline or other flammable fluids.

Telescopic Lifting Clamp



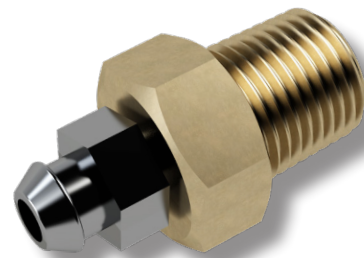
Telescopic Lifting Clamp Assemblies (TLC) are specifically designed to lift EECO Telescopic Jacks, and are to be mounted on the cylinder under the lower head. These clamps are designed to lift and hold hydraulic jack cylinders safely during construction. Constructed of formed steel bar for light weight and easy handling. These clamps are equipped with shackles for lifting and tensioning bolts for applying pressure around cylinder pipe. The maximum rated load for the Telescopic Cylinder Lifting Clamp is 2,000 lbs.

Piston Repair Kit



This **Piston Repair Kit (PRK-01)** is designed to repair damaged pistons with deep scratches or pits that cause excessive weeping of oil through the seals. The two part metal filled epoxy is ideal for filling in deep scratches and pits that are too deep to be removed with just light sanding. Using this kit, once properly applied, can prolong a damaged piston and seal life.

Jack Bleeder Assembly



The **1/8" NPT Jack Bleeder Assembly (A879)** is compact and easily installed. This bleeder is rated at 1500 psi. The barbed bleeder screw enables use of a 1/4" I.D. soft plastic or rubber tubing to direct oil into a container while bleeding the jack.