

JACK UNIT	PACKING SET PART NUMBER	HEX HEAD CAP SCREW SIZE	TORQUE (ft/lbs)
LJ-9	41.002421001700	1"-8 X 3"	95-100
LJ-10	41.002421000500		
LJ-12	41.002421000700	1"-8 X 3 1/2"	
LJ-14	41.002421001300	1 1/8"-7 X 3 1/2"	
LJ-16	41.002421001500	1 1/4"-7 X 4"	
LJ-18	41.002421002700		

EECOLube



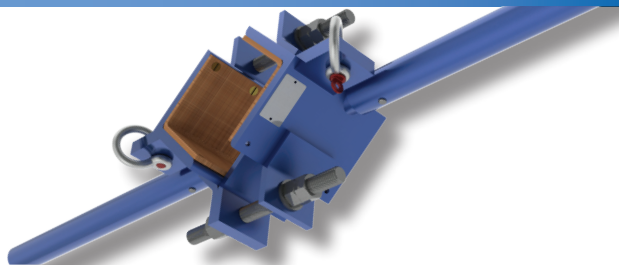
EECOLube is a performance improving friction modifier oil additive formulated to reduced "Stick Slip", rough starts & stops and prevent noise in hydraulic elevator systems.

Pevicol



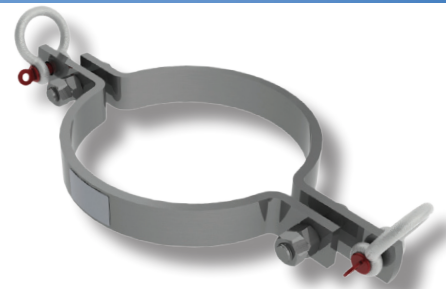
The PeViCol PVC Cement (PVC-1) was specially designed for gluing PVC pipe. This non-flammable cement does not require a primer. The low odor and low emissions allows it to be used indoors with minimal ventilation. The cement can be used in a temperature range from 32° - 175° F (0° - 80° C). PeViCol PVC Cement, a NordColl product, is not classified as an environmental toxin and the solvents in solution are biologically degradable.

Piston Clamp/Wrench



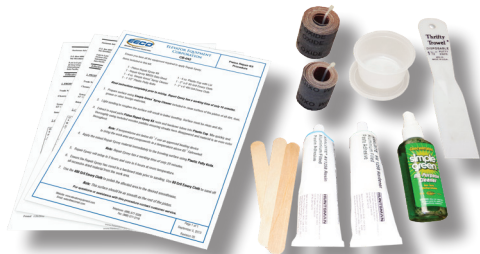
Piston Clamp / Wrenches (PCW) are designed to safely lift, hold, and tighten pistons during construction. The welded steel construction with replaceable tension pads and tensioning bolts for applying equal pressure around a piston ensures higher gripping force than wooden clamps. The maximum rated load for the Piston Clamp/Wrench is 1,950 lbs.

Cylinder Lifting Clamp



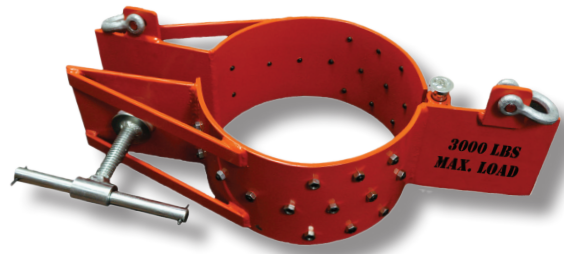
Cylinder Lifting Clamps (CLC) are designed to lift and hold hydraulic jack cylinders safely during construction. Constructed of formed steel bar for light weight and easy handling. These clamps are equipped with shackles for lifting and tensioning bolts for applying pressure around cylinder pipe.

Piston Repair Kit



This Piston Repair Kit (PRK-01) is designed to repair damaged pistons with deep scratches or pits that cause excessive weeping of oil through the seals. The two part metal filled epoxy is ideal for filling in deep scratches and pits that are too deep to be removed with just light sanding. Using this kit, once properly applied, can prolong a damaged piston and seal life.

PVC Lifting Clamp



PVC Lifting Clamps (PVCC) are designed to lift and hold flush joint PVC pipe safely. Constructed of formed and welded 1/4" steel plate for light weight and easy handling, these clamps are equipped with two holding tabs and shackles for lifting. A tee bolt tensioner is used to apply pressure around PVC pipe with cupped set screws for gripping. The maximum rated load for the PVC Lifting Clamp is 3,000 lbs.