



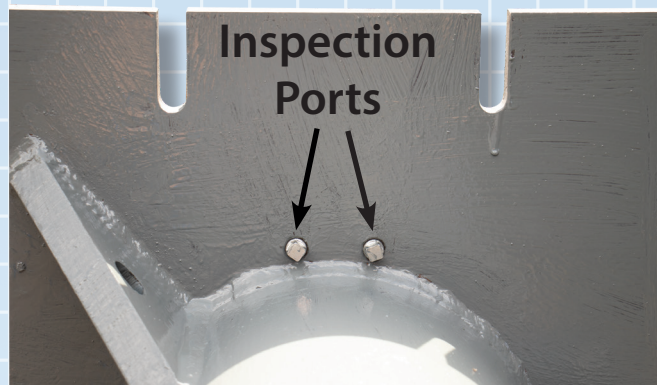
Elevator Equipment Corporation
"Simplicity in Motion"

INSPECTION SYSTEMS

Electronic Leak Monitoring System



Evacuation System



Models & Configurations

Jack Inspection Ports

The EECO Standard **Jack Inspection Ports** are used to inspect fluid leakage into the cavity between the cylinder and PVC liner of in-ground hydraulic jack systems. They are used in conjunction with an Electrical Fish Tape. The plug is removed from the Inspection Port and a small piece of absorbant material is attached to the hook end of the Electrical Fish Tape. The tape is then inserted into the Inspection Port and pushed to the bottom of the PVC System. The tape is then pulled out and inspected. Presence of water indicates that the PVC is leaking and presence of oil shows the Jack Unit is leaking.

Evacuation System

The **Evacuation System (EVS)** is to be used to evacuate / inspect fluid leakage into the cavity between the cylinder and PVC liner of new or existing in-ground hydraulic jack system. The minimum required space between the largest outside diameter of the cylinder assembly and inside diameter of the PVC should be 1/2".

Model No. EVS-01

Electronic Leak Monitoring System

Purpose

To detect the leakage of either water or oil into the sealed PVC liner and also provides a manual monitoring method for verifying the leakage in the liner.

General Design

The Electronic Leak Monitoring System (ELMS) is designed as a discriminating device. That is, the monitor array is designed to report the presence of a liquid trapped between the jack cylinder and the sealed PVC liner and to determine whether the liquid is water or oil. A secondary test for verification of leakage can be made by applying a suction pump to the test line at the monitor control block.

Leakage Notification

The solid-state monitoring station requires a regular 120 VAC power supply and can be mounted up to 60 feet away from the jack in the machine room.

Monitor Response

The monitor is equipped with three (3) LED's which are: Green for Power; Yellow for Water; Red for Oil. If water is detected, only the yellow LED will light. If oil is detected, the red LED will light and an eighty (80) dba sonic alarm sounds intermittently, notifying of a possible cylinder leak. At the same time, a type "C" dry contact is provided which can be used to simulate a low oil condition or for remote monitoring.

Features

- Continuous monitoring.
- Discriminates between water and oil.
- Solid-state monitoring station.
- Secondary leak verification system.
- Can be used for remote monitoring.
- Sealed PVC liner with pressure testing capability.
- Easy access to monitor control block at jack head.



Jack leak monitor station, which is mounted near the elevator controller.



Jack unit cut-a-way showing the EECO cylinder leak monitor installed in a sealed PVC liner.



For further details and more of our accessories visit our website
www.elevatorequipment.com • sales@eecomail.com • (888) 577-EECO

