



Hydraulic Dampener

The **Hydraulic Dampener (EHD)** is extremely effective in suppressing the sound and pulsation present in hydraulic elevator systems. The EHD has a minimum burst pressure of 6000 psi with an ASME A17.1/CSA B44 allowable working pressure of 1200 psi.

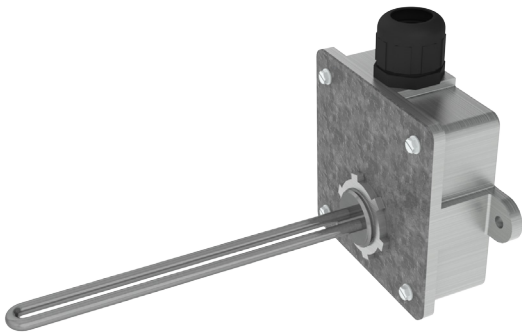
Oil Cooler

The **Oil Cooler (OC)** is extremely efficient in cooling the oil in the hydraulic elevator machine room in which it is installed. The heart of the unit consists of a triple screw pump which is highly reliable and quiet. An optional Thermal Control System is also available.



Tank Heater

The **Tank Heater (TH)** is simple to install and operate. Designed to keep your hydraulic oil at the optimum operating temperature in cooler environments to provide optimum operation of your hydraulic elevator system. Pre-Set 110° F Thermostat, 120 Volt AC, 250 Watts, 2.1 Amps, Oil-Tight Fittings included.



Shut Off Valve

The **Shut Off Valve (SOV)** is used to isolate one section of the system from another. All Shut Off Valves are constructed of ductile iron bodies and use a stainless steel ball. A locking device is standard on all sizes.



Valve Return Filter Kit

The **Valve Return Filter (VRF)** attaches to the tank return port of the valve. The filter bag is easily replaceable. The EECO VRF allows you to easily capture particles 5 microns in size and larger as well as helping to prevent the buildup of debris within the tank, making it easier to clean.



Low Oil Switch

A **Low Oil Switch (LOS)** is used to detect the oil level in a reservoir. The 1-3/16" diameter float helps to limit surges that might occur. The switch is UL recognized and CSA listed for a maximum of 3 amps @ 250 VAC with a SPST.

The standard configuration is normally open which can be changed to normally closed, by inverting the float on the units stem. Mounting is accomplished by 1/4" NPT and electrical termination are two 18 AWG, 39" long wires.

Load Weighing Kit

EECO's **Load Weighing Kit (LWK)** is an addition to a new or existing Power Unit to prevent the elevator from being overloaded. The switch can be wired into the controller, if the provision is available, through either a normally open or normally closed contact.



Oil Level Sight Glass

The **Oil Level Sight Glass** for hydraulic elevator power units is used to visually inspect the oil level in the tank. It is available in 1" Diameter with NPT threads.