

# Request for Hydraulic Elevator Jack Unit Quotation

Fax this completed form to EECO at: (323) 245-9771 (Los Angeles, CA) or (765) 966-7299 (Richmond, IN)

Company \_\_\_\_\_ Date \_\_\_\_\_ Date Required \_\_\_\_\_  
 Contact \_\_\_\_\_ E-mail Address \_\_\_\_\_  
 Company Address \_\_\_\_\_ Telephone (     ) \_\_\_\_\_  
 City \_\_\_\_\_ State \_\_\_\_\_ Zip \_\_\_\_\_ Fax (     ) \_\_\_\_\_  
 Project \_\_\_\_\_

Provide data as complete as possible. Our ability to provide proper equipment depends upon the completeness and accuracy of the data that you furnish.

**(A) For:**

- In-ground     Holeless
- New Installation
- Modernization
- Replacement
- Repair
- Elevator is out of service**

Ship date requested (be specific):  
 \_\_\_\_\_

Special requirements (describe below):

**(B) Provide:**

- Complete jack unit
  - Cylinder only
  - Cylinder with head
  - Piston only
- Number of sections required or longest possible section length to install: \_\_\_\_\_

**Cylinder**

- Threaded     Slip Weld
- Butt weld

**All cylinder joints should be welded after assembly!**

**(C) Include Options:**

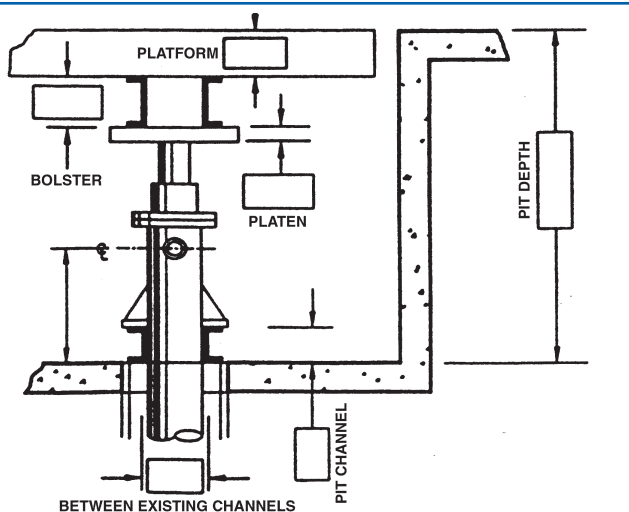
- Tape Wrap     Epoxy
- PVC     sch40     sch80
- Leak monitor system
- Provision for future travel
- Platen     Isolated
- Pit Channels     Buffers
- Pipe Rupture Valve:
  - Threaded     Grooved
- Shut Off Valve, Qty: \_\_\_\_\_
  - Threaded     Grooved
- Scavenger System
- Provision for plunger gripper
- Spare repacking kit

**(D) Jack/Project Data**

Capacity \_\_\_\_\_ lbs.    Total floor travel \_\_\_\_\_ ft. \_\_\_\_\_ in.    Piston O. D. \_\_\_\_\_  
 Car Weight \_\_\_\_\_ lbs.    Top Over travel\* \_\_\_\_\_    or Circumference \_\_\_\_\_  
 Piston Weight \_\_\_\_\_ lbs.    Bottom Under travel\*\* \_\_\_\_\_    Piston Wall \_\_\_\_\_  
 Total Gross \_\_\_\_\_ lbs.    \* Over travel is with the piston against stop ring.    Cylinder O. D. \_\_\_\_\_  
 Speed \_\_\_\_\_ fpm    \*\* Under travel includes run-by, spring compression and bottom clearance.    or Circumference \_\_\_\_\_

**In-Ground Installation**

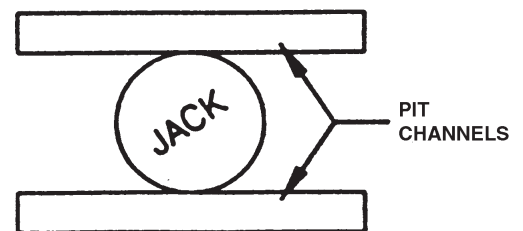
Complete as applicable (these dimensions are not required for quotation).



- Cylinder to fit within existing \_\_\_\_\_ inch I. D. casing.

Oil Line Outlet Size: \_\_\_\_\_

- Threaded or     Grooved



Indicate location of oil line outlet.